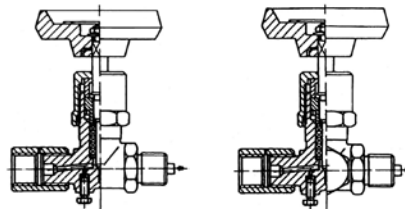


## Closing Pressure Gauge Valve Testing Pressure Gauge Valve with Pin and Sleeve Connection



### Description

Closing pressure gauge valve, type A, DN 3, asbestos free sealing, length 85 mm, including 2x sealing TM 20 CU

Type	Material	Max. operating temperature	Max. operating overpressure	Connection	AN
• 1 110 410	Brass CuZn40Pb2	200 °C	25 MPa	M20x1.5 / M20x1.5L	137517
• 1 110 405	Stainless steel 1.4021	300 °C	63 MPa	M20x1.5 / M20x1.5L	137517
• 1 110 413	Stainless steel 1.6903	500 °C	63 MPa	M20x1.5 / M20x1.5L	137517
• 1 110 412	Structural alloy steel 1.7715	525 °C	63 MPa	M20x1.5 / M20x1.5L	137517

Example of order: 1 110 412

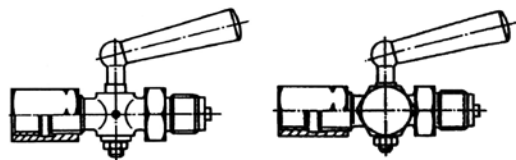
### Description

Testing pressure gauge valve, type B, DN 3, asbestos free sealing, length 85 mm, including 2x sealing TM 20 CU

Type	Name	Material	Max. operating temp. / overpressure	Connection / Testing thread	AN
• 1 110 406	—	Brass CuZn40Pb2	200 °C / 25 MPa	M20x1.5 / M20x1.5L / M20x1.5	137517
• 1 110 416	VZNM	Stainless steel 1.4021	300 °C / 63 MPa	M20x1.5 / M20x1.5L / M20x1.5	137517
• 1 110 417	—	Stainless steel 1.6903	500 °C / 63 MPa	M20x1.5 / M20x1.5L / M20x1.5	137517
• 1 110 415	VZOM	Structural alloy steel 1.7715	525 °C / 63 MPa	M20x1.5 / M20x1.5L / M20x1.5	137517
• 1 110 491	VZOG	Structural alloy steel 1.7715	525 °C / 63 MPa	G1/2" / M20x1.5L / M20x1.5	137517
• 1 110 492	VZNG	Stainless steel 1.4021	300 °C / 63 MPa	G1/2" / M20x1.5L / M20x1.5	137517

Example of order: 1 110 416

## Closing Pressure Gauge Cock Testing Pressure Gauge Cock with Pin and Sleeve Connection



### Description

Closing pressure gauge cock, pin / sleeve connection, PN 25, DN 3.5, DIN 16 262, including 2x sealing TM 20 CU

Type	Connection	Length	Material	Max. operating temperature
• 1 210 201	G1/2" / G1/2"L	80 mm	Brass CuZn40Pb2	50 °C
• 1 210 202	M20x1.5 / M20x1.5L	80 mm	Brass CuZn40Pb2	50 °C

Example of order: 1 210 202

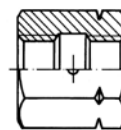
### Description

Testing pressure gauge cock, pin / sleeve connection, PN 25, DN 3.5, DIN 16 263, including 2x sealing TM 20 CU

Type	Connection	Length	Material	Max. operating temperature
• 1 210 204	M20x1.5 / M20x1.5L / M20x1.5	80 mm	Brass CuZn40Pb2	50 °C

Example of order: 1 210 204

## Pressure Gauge Connection



### Description

Pressure gauge connection, AN 137524, type A

Type	Connection	Material	Max. operating temperature / overpressure
13 7520 00	M12x1.5 / M12x1.5L	Carbon steel 1.0715	200 °C / 63 MPa
• 81 0157	M20x1.5 / M20x1.5L	Carbon steel 1.0715	200 °C / 63 MPa
• 13 7520 02	M20x1.5 / M20x1.5L	Stainless steel 1.4301	300 °C / 50 MPa
810 146	M20x1.5 / M20x1.5L	Carbon steel 1.0715	200 °C / 63 MPa
81 0096	G1/4" / G1/4"L	Carbon steel 1.0715	200 °C / 63 MPa
81 0079	G1/2" / G1/2"L	Carbon steel 1.0715	200 °C / 63 MPa

Example of order: 13 7520 02

• ... Ex stock version

Архангельск (8182)63-90-72

Астана +7(7172)727-132

Белгород (4722)40-23-64

Брянск (4832)59-03-52

Владивосток (423)249-28-31

Волгоград (844)278-03-48

Вологда (8172)26-41-59

Воронеж (473)204-51-73

Екатеринбург (343)384-55-89

Иваново (4932)77-34-06

Ижевск (3412)26-03-58

Казань (843)206-01-48

Калининград (4012)72-03-81

Калуга (4842)92-23-67

Кемерово (3842)65-04-62

Киров (8332)68-02-04

Краснодар (861)203-40-90

Красноярск (391)204-63-61

Курск (4712)77-13-04

Липецк (4742)52-20-81

Магнитогорск (3519)55-03-13

Москва (495)268-04-70

Мурманск (8152)59-64-93

Набережные Челны (8552)20-53-41

Нижний Новгород (831)429-08-12

Новокузнецк (3843)20-46-81

Новосибирск (383)227-86-73

Орел (4862)44-53-42

Оренбург (3532)37-68-04

Пенза (8412)22-31-16

Пермь (342)205-81-47

Ростов-на-Дону (863)308-18-15

Рязань (4912)46-61-64

Самара (846)206-03-16

Санкт-Петербург (812)309-46-40

Саратов (845)249-38-78

Смоленск (4812)29-41-54

Сочи (862)225-72-31

Ставрополь (8652)20-65-13

Тверь (4822)63-31-35

Томск (3822)98-41-53

Тула (4872)74-02-29

Тюмень (3452)66-21-18

Ульяновск (8422)24-23-59

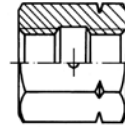
Уфа (347)229-48-12

Челябинск (351)202-03-61

Череповец (8202)49-02-64

Ярославль (4852)69-52-93

# Reducing Pressure Gauge Connection



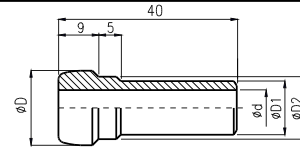
## Description

Pressure gauge connection, AN 137524, type G

Type	Connection	Material	Max. operating temperature / overpressure
• 13 7523 00	G1/2" / M20x1.5L	Carbon steel 1.0715	200 °C / 63 MPa
• 13 7523 01	G1/2" / M20x1.5L	Stainless steel 1.4021	300 °C / 50 MPa

Example of order: 13 7523 00

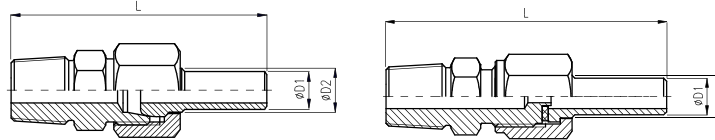
# Welding Cone



Type	Description		
• KN	Welding cone		
Code	For pipe union	Diameter of cone D	Through hole of cap nut
• 18	M18x1.5; M20x1.5	d. 14.7	d.12 mm
• 20	M22x1.5	d. 16.7	d.14 mm
Code	Dimensions D1 (D2)/d	Nominal pressure	
• 3	d.12 / d.8	PN 160	- not for KN 20
• 4	d.12(d.14)/d.8	PN 160	- not for KN 18
• 5	d.14 / d.8	PN 400	- not for KN 18
• 9	Other		
Code	Material	Max. operating temperature	
• 1	Carbon steel 1.0570	400 °C	
• 2	Structural alloy steel 1.7715	550 °C	
• 4	Stainless steel 1.4541	550 °C	
• 9	Other		

Example of order: KN 18 3 1

# Reducing Pipe Union



Type	Description		
• SK	Reducing pipe union with welding cone and cap nut		
Versions of reducing pipe union			
Code	Thread of pipe union	Material of pipe union	Material of cap nut
• 1	1/2"-14 NPT / M22x1.5	Stainless steel 1.4301	Carbon steel 1.0721
• 9	Other		
Versions of reducing pipe union			
Code	Dimensions D1 (D2) / d	Diameter of cone D	Nominal pressure
• 4	d.12 (d.14) / d.8	d.16.7	PN 160
• 5	d.14 / d.8	d.16.7	PN 400
• 9	Other		
Code	Material of cone	Max. operating temperature	
• 1	Carbon steel 1.0570	400 °C	
• 2	Structural alloy steel 1.7715	500 °C	
• 4	Stainless steel 1.4541	500 °C	
• 9	Other		

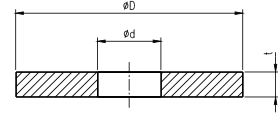
Example of order: SK 1 5 4 (SK 1 4 1 = DZ1, SK 1 4 4 = DZ2, SK 1 5 1 = DZH1, SK 1 5 4 = DZH2)

Type	Description			
• SV	Reducing pipe union with welding nipple and cap nut			
Versions of reducing pipe union				
Code	Thread of pipe union	Material of pipe union	Material of cap nut	Material of sealing
• 1	1/2"-14 NPT / M20x1.5	Stainless steel 1.4301	Carbon steel 1.0721	Cu
• 2	1/4"-18 NPT / M20x1.5	Stainless steel 1.4301	Carbon steel 1.0721	Cu
• 9	Other		d.14 mm	
Versions of nipple				
Code	Dimensions D1 (D2) / d	Nominal pressure		
• 4	d.12 (d.14) / d.8	PN 160		
• 5	d.14 / d.8	PN 400		
• 9	Other			
Code	Material of nipple	Max. operating temperature		
• 1	Carbon steel 1.0570	400 °C		
• 2	Structural alloy steel 1.7715	500 °C		
• 4	Stainless steel 1.4541	500 °C		
• 9	Other			

Example of order: SV 1 5 4 (SV 1 4 1 = DZM1, SV 1 4 4 = DZM2, SV 1 5 1 = DZMH1, SK 1 5 4 = DZMH2)

• ... Ex stock version

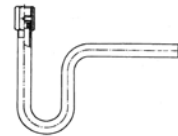
## Seals for Manometric Pipe Union



Type	Description	
• TM	Seal for manometric pipe union	
Code	For manometric pipe union	Dimensions (diameter D/ diameter d - t)
• 12	M12x1.5 ; G1/4"	d.9.5 / d.5.5 - 2
• 20	M20x1.5 ; G1/2"	d.17 / d.6.5 - 2
• 99	Other	
Code	Material	Tmax
• CU	Copper (annealed)	300 °C
• AL	Aluminium	300 °C
• PTFE	PTFE	180 °C
• 9	Other	

Example of order: TM 20 CU

## Welding Condensation Loop, U-Form

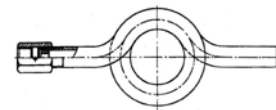


**Description**  
Welding condensation loop, U-form, type B, PN 250

Type	Connection	Material	AN	Max. operating temperature
• 1 780 067	M20x1.5	Carbon steel 1.0570	137530	300 °C
• 1 780 059	M20x1.5	Stainless steel 1.4541	137530	300 °C

Example of order: 1 780 067

## Welding Coiled Condensation Loop

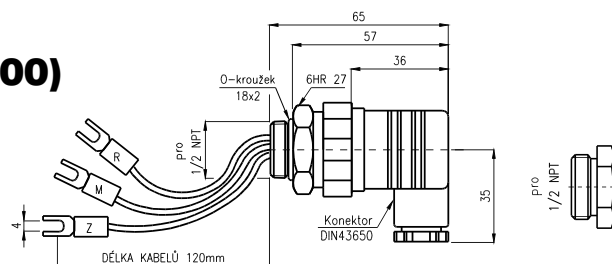


**Description**  
Welding coiled condensation loop, type D, PN 250

Type	Connection	Material	AN	Max. operating temperature
• 1 780 069	M20x1.5	Carbon steel 1.0570	137530	300 °C
• 1 780 061	M20x1.5	Stainless steel 1.4541	137530	300 °C

Example of order: 1 780 069

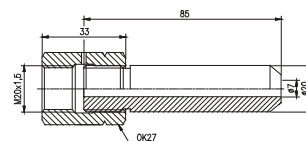
## Connector DIN 43650 (ISO 4400) and Blind Cap 1/2" NPT



Type	Description
• DK1	Connector DIN 43650 (ISO 4400) and blinder for inner thread 1/2"-14 NPT

Example of order: DK1

## Adapter with Connection



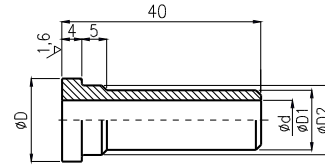
Type	Description	
• NP	Adapter with connection M20x1.5, PN 630	
Code	Material of adapter / connection	Max. operating temperature
• 1	Carbon steel 1.0570 / stainless steel 1.4301	400 °C
• 4	Carbon steel 1.4301 / stainless steel 1.4301	400 °C
• 9	Other	

Example of order: NP1

- ... Ex stock version

## Pressure Sensors Accessories

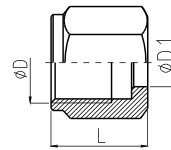
### Welding Nipple



Type	Description		
• VN	Welding nipple		
Code	For pipe union	Diameter D	
• 20	M20x1.5; G1/2"	d.17.5	
• 99	Other		
Code	Dimensions D1 (D2)/d	Nominal pressure	Through hole of cap nut
• 4	d.12(d.14)/d.8	PN 160	d.14 mm
• 5	d.14 /d.8	PN 400	d.14 mm
• 9	Other		
Code	Material	Max. operating temperature	
• 1	Carbon steel 1.0570	400 °C	
• 2	Structural alloy steel 1.7715	550 °C	
• 4	Stainless steel 1.4541	550 °C	
• 9	Other		

Example of order: VN 20 5 1

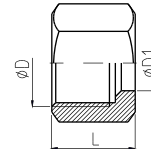
### Cap Nut for Welding Nipple



Type	Description		
• MV	Cap nut for welding nipple, nominal pressure PN 400		
Code	Dimension of thread D	Length L	
• 20M	M20x1.5	25 mm	
• 1/2G	G1/2"	25 mm	
• 99	Other		
Code	Through hole of nut D1	For nipple	
• 4	d.14 mm	VN204 . . , VN205 .	
• 9	Other		
Code	Material	Max. operating temperature	
• 0	Carbon steel 1.0721	300 °C	
• 4	Stainless steel 1.4301	400 °C	
• 9	Other		

Example of order: MV 20M 4 0

### Cap Nut for Welding Cone



Type	Description		
• MK	Cap nut for welding cone, nominal pressure PN 400		
Code	Dimension of thread D	Length L	
• 18M	M18x1.5	16 mm	
• 20M	M20x1.5	21 mm	
• 22M	M22x1.5	21 mm	
• 99	Other		
Code	Through hole of nut D1	For cone	
• 2	d.12 mm	KN183 .	(not for thread M22x1.5)
• 4	d.14 mm	KN204 . . , KN205 .	(not for thread M18x1.5 and M20x1.5)
• 9	Other		
Code	Material	Max. operating temperature	
• 0	Carbon steel 1.0721	300 °C	
• 4	Stainless steel 1.4301	400 °C	
• 9	Other		

Example of order: MK 20M 2 0

• ... Ex stock version

Архангельск (8182)63-90-72  
Астана +7(7172)727-132  
Белгород (4722)40-23-64  
Брянск (4832)59-03-52  
Владивосток (423)249-28-31  
Волгоград (844)278-03-48  
Вологда (8172)26-41-59  
Воронеж (473)204-51-73  
Екатеринбург (343)384-55-89  
Иваново (4932)77-34-06  
Ижевск (3412)26-03-58  
Казань (843)206-01-48

Калининград (4012)72-03-81  
Калуга (4842)92-23-67  
Кемерово (3842)65-04-62  
Киров (8332)68-02-04  
Краснодар (861)203-40-90  
Красноярск (391)204-63-61  
Курск (4712)77-13-04  
Липецк (4742)52-20-81  
Магнитогорск (3519)55-03-13  
Москва (495)268-04-70  
Мурманск (8152)59-64-93  
Набережные Челны (8552)20-53-41

Нижний Новгород (831)429-08-12  
Новокузнецк (3843)20-46-81  
Новосибирск (383)227-86-73  
Орел (4862)44-53-42  
Оренбург (3532)37-68-04  
Пенза (8412)22-31-16  
Пермь (342)205-81-47  
Ростов-на-Дону (863)308-18-15  
Рязань (4912)46-61-64  
Самара (846)206-03-16  
Санкт-Петербург (812)309-46-40  
Саратов (845)249-38-78

Смоленск (4812)29-41-54  
Сочи (862)225-72-31  
Ставрополь (8652)20-65-13  
Тверь (4822)63-31-35  
Томск (3822)98-41-53  
Тула (4872)74-02-29  
Тюмень (3452)66-21-18  
Ульяновск (8422)24-23-59  
Уфа (347)229-48-12  
Челябинск (351)202-03-61  
Череповец (8202)49-02-64  
Ярославль (4852)69-52-93